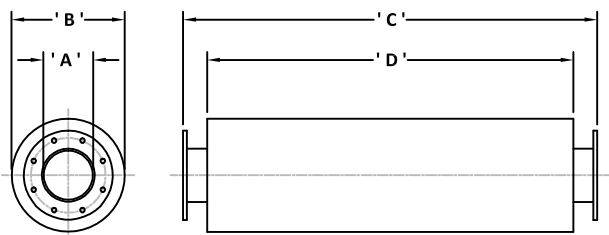




# HXSLS & HXSLS-SE Type: Low Pressure Drop, Extra Long Straight Line Silencers. 35dB(A) Insertion Loss.

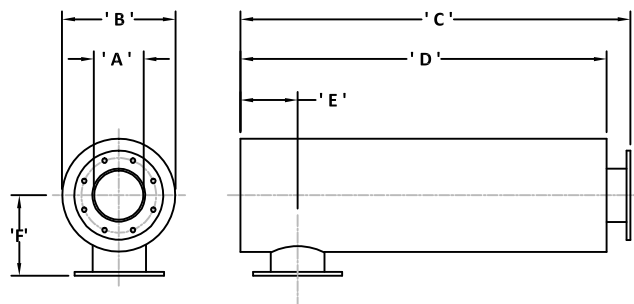
## AXIAL INLET & AXIAL OUTLET VERSIONS



Silencer Part Number	'A'	'B'	'C'	'D'	Wt. (kg)
HXSLS 025 (F & S)	25.4	152.0	860.0	800.0	8.5
HXSLS-038 (F & S)	38.1	178.0	1000.0	900.0	12.3
HXSLS 050 (F & S)	50.8	210.0	1100.0	1000.0	19.0
HXSLS 063 (F & S)	63.5	230.0	1200.0	1100.0	22.0
HXSLS 075 (F & S)	76.2	260.0	1350.0	1250.0	30.5
HXSLS 090 (F & S)	88.9	310.0	1450.0	1300.0	40.0
HXSLS 100 (F & S)	101.6	360.0	1550.0	1400.0	52.0
HXSLS 125 (F)	127.0	410.0	1850.0	1600.0	95.0
HXSLS 150 (F)	152.4	460.0	1950.0	1800.0	125.0
HXSLS 175 (F)	177.8	510.0	2150.0	2000.0	150.0
HXSLS 200 (F)	203.2	560.0	2350.0	2200.0	168.0
HXSLS 225 (F)	228.6	610.0	2550.0	2400.0	205.0
HXSLS 250 (F)	254.0	660.0	2750.0	2600.0	340.0
HXSLS 300 (F)	304.8	720.0	3200.0	3000.0	500.0
HXSLS 350 (F)	355.6	760.0	3200.0	3000.0	660.0
HXSLS 400 (F)	406.4	910.0	3900.0	3700.0	800.0
HXSLS 450 (F)	457.2	900.0	4200.0	4000.0	850.0
HXSLS 500 (F)	508.0	1000.0	4300.0	4100.0	950.0
HXSLS 550 (F)	558.8	1250.0	4900.0	4700.0	1350.0
HXSLS 600 (F)	609.6	1350.0	5200.0	5000.0	1800.0

'S' denotes B.S.P. Screwed versions are available as standard.  
 'F' denotes Flanged Versions are available in BS 10 Table 'D' drillings as standard.  
 All the dimensions and weights given are approximate and may vary under manufacturing conditions.  
 All dimensions and weights given are not binding and may change without prior warning.  
 Larger sizes are available upon request as well as bespoke design and manufacture.  
 All units can be installed vertically or horizontally without detriment acoustically.

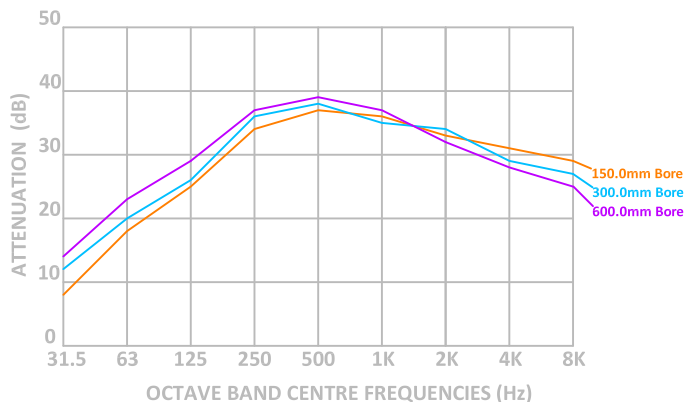
## RADIAL INLET & AXIAL OUTLET VERSIONS



Silencer Part Number	'A'	'B'	'C'	'D'	'E'	'F'	Wt. (kg)
HXSLS-SE 025 (F & S)	25.4	152.0	830.0	800.0	38.0	105.0	9.8
HXSLS-SE 038 (F & S)	38.1	178.0	950.0	900.0	57.0	140.0	14.6
HXSLS-SE 050 (F & S)	50.8	210.0	1050.0	1000.0	57.0	145.0	21.0
HXSLS-SE 063 (F & S)	63.5	230.0	1150.0	1100.0	65.0	165.0	25.0
HXSLS-SE 075 (F & S)	76.2	260.0	1300.0	1250.0	76.0	180.0	36.0
HXSLS-SE 090 (F & S)	88.9	310.0	1375.0	1300.0	89.0	230.0	48.0
HXSLS-SE 100 (F & S)	101.6	360.0	1075.0	1400.0	115.0	255.0	67.0
HXSLS-SE 125 (F)	127.0	410.0	1675.0	1600.0	153.0	280.0	108.0
HXSLS-SE 150 (F)	152.4	460.0	1875.0	1800.0	180.0	305.0	135.0
HXSLS-SE 175 (F)	177.8	510.0	2075.0	2000.0	180.0	330.0	165.0
HXSLS-SE 200 (F)	203.2	560.0	2275.0	2200.0	205.0	355.0	185.0
HXSLS-SE 225 (F)	228.6	610.0	2475.0	2400.0	205.0	380.0	225.0
HXSLS-SE 250 (F)	254.0	660.0	2675.0	2600.0	230.0	405.0	340.0
HXSLS-SE 300 (F)	304.8	720.0	3100.0	3000.0	283.0	460.0	500.0
HXSLS-SE 350 (F)	355.6	760.0	3100.0	3000.0	283.0	480.0	660.0
HXSLS-SE 400 (F)	406.4	910.0	3800.0	3700.0	380.0	555.0	800.0
HXSLS-SE 450 (F)	457.2	900.0	4100.0	4000.0	380.0	550.0	850.0
HXSLS-SE 500 (F)	508.0	1000.0	4400.0	4300.0	380.0	600.0	950.0
HXSLS-SE 550 (F)	558.8	1250.0	4700.0	4600.0	460.0	725.0	1350.0
HXSLS-SE 600 (F)	610.0	1350.0	5100.0	5000.0	460.0	775.0	1800.0

All units are manufactured from mild carbon steel to BS-EN 10025 S275JR or equal.  
 The standard external protection is one coat heat resisting aluminium paint suitable for elevated temperatures. Alternative finishes including such processes as Aluminium/Zinc metal spray and galvanizing are available at extra cost, if required.  
 Alternative materials of construction are available if required. These include stainless steel Types 321, 316, 316L, 304 304L as well as Corten A & B, Monel & Brass  
 All units are supplied with drain points.

## TYPICAL INSERTION LOSS FIGURES FOR HXSLS & HXSLS-SE TYPE UNITS (Not Binding)



The HXSLS & HXSLS-SE (Side-Entry) type, exponential straight line exhaust gas silencer is a simple energy converter utilizing the exhaust gas energy to excite individual fibres of different lengths in the acoustic infill to create friction resulting in heat energy to be formed which is then dissipated to the silencer casing or to the exhaust gas flow. The design also inadvertently uses the Helmholtz principle to increase the insertion loss to approximately 35dB(A) to give a silencer with a low pressure drop and good capabilities at 250 hertz and greater.  
 It can be used singularly as a primary silencer on large irrigation pumps, small and medium power packs and similar installations where noise is considered a borderline problem to local surroundings. Due to the effect on the higher frequencies this design is mainly used a terminal silencer for expansion/reflective primary silencers types HP, HPA, HPRA & HPAA and can be close coupled or remotely mounted to reduce exhaust gas noise to much lower acoustic levels than the HSL & HESLS versions when placed in series.  
 With additional modifications the silencer design can be used for steam, air or gas lines both inline or for discharge applications. Under the same circumstances the equipment can also be used for air intake applications.  
 Consult Halliwell Engineering Staff for further details prior to order.